

**Portage Public Schools
Monitoring Report**

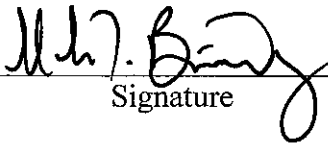
Policy Type: Executive Limitation
Policy Title: (2.9) Emergency Superintendent Succession

Global Board Policy

In order to protect the board from sudden loss of Superintendent services, the Superintendent may have no fewer than two other executives familiar with board and Superintendent issues and processes.

Certification

I hereby present my monitoring report on Executive Limitation, 2.9, "Emergency Superintendent Succession" in accordance with the monitoring schedule established by the Board. I certify that the information provided in this report is true as of May 4, 2015.



Signature

4.28.15

Date

Interpretation

I interpret this Policy to mean that the Board expects me to have at least two central office level administrators prepared and knowledgeable about organizational procedures and District-related issues in the event I am unable to provide District leadership services. This interpretation remains unchanged since last monitored in March 2014.

Report

There is no further delineation of this Policy.

There are two individuals who have sufficient knowledge of operations and District issues who could serve the Board in my absence: Larry Killips, Assistant Superintendent of Instruction and Assessment, and Ron Herron, Assistant Superintendent of Operations. Both Larry and Ron attend Board of Education meetings on a regular basis and are integral members of the District's Executive Leadership Team.

Our Executive Leadership Team meets weekly to discuss operational and instructional issues as well as to review Board Agendas. This team operates with a great deal of transparency and trust. Other than sensitive or confidential information, every member of the team is very knowledgeable of District issues.

In addition to these weekly meetings, Ron, Larry and I meet on a periodic basis to discuss direction, operations and other issues that are important to the District. Furthermore, Administrative Assistant, Edna Kent, has served the District and Board for several years. She has intimate knowledge of Board Policies and operational issues and stands ready to assist either Ron or Larry should the need arise.

Monitoring Report

Page -2-

Policy Type: Executive Limitation

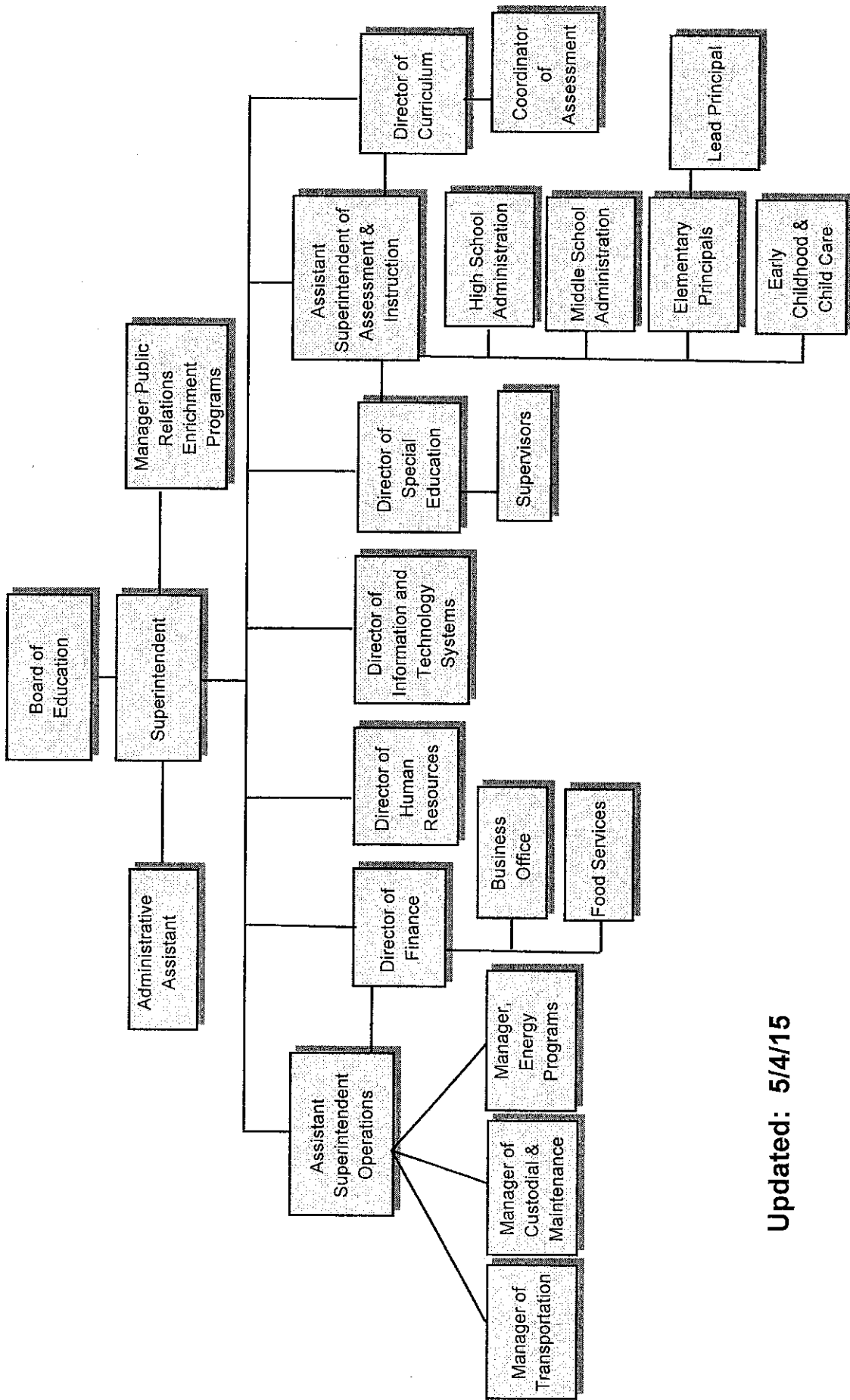
Policy Title: (2.9) Emergency Superintendent Succession

Attached is the current organizational structure of the District. In this organization, eight administrators report directly to me. Three of them also report to one of the Assistant Superintendents as their job functions are closely related. These eight administrators and I comprise the Executive Leadership Team

Conclusion Statement

The organization met expectations.

PORTAGE PUBLIC SCHOOLS ADMINISTRATIVE STRUCTURE



Updated: 5/4/15