

# Achievement Update:

*Spring 2009 High School Data & 08-09 Ed Yes!*

Presented to the  
Portage Public Schools  
Board of Education  
September 14<sup>th</sup>, 2009

# Driving Questions

Regarding our final product...

- How well prepared are our students when they graduate, and how do we know?

Regarding their progress within our district...

- How well are our students prepared in reading, writing, and mathematics literacy at the key transition years
  - end of 2<sup>nd</sup>/3<sup>rd</sup> grade years
  - end of 5<sup>th</sup> grade
  - end of 8<sup>th</sup> grade

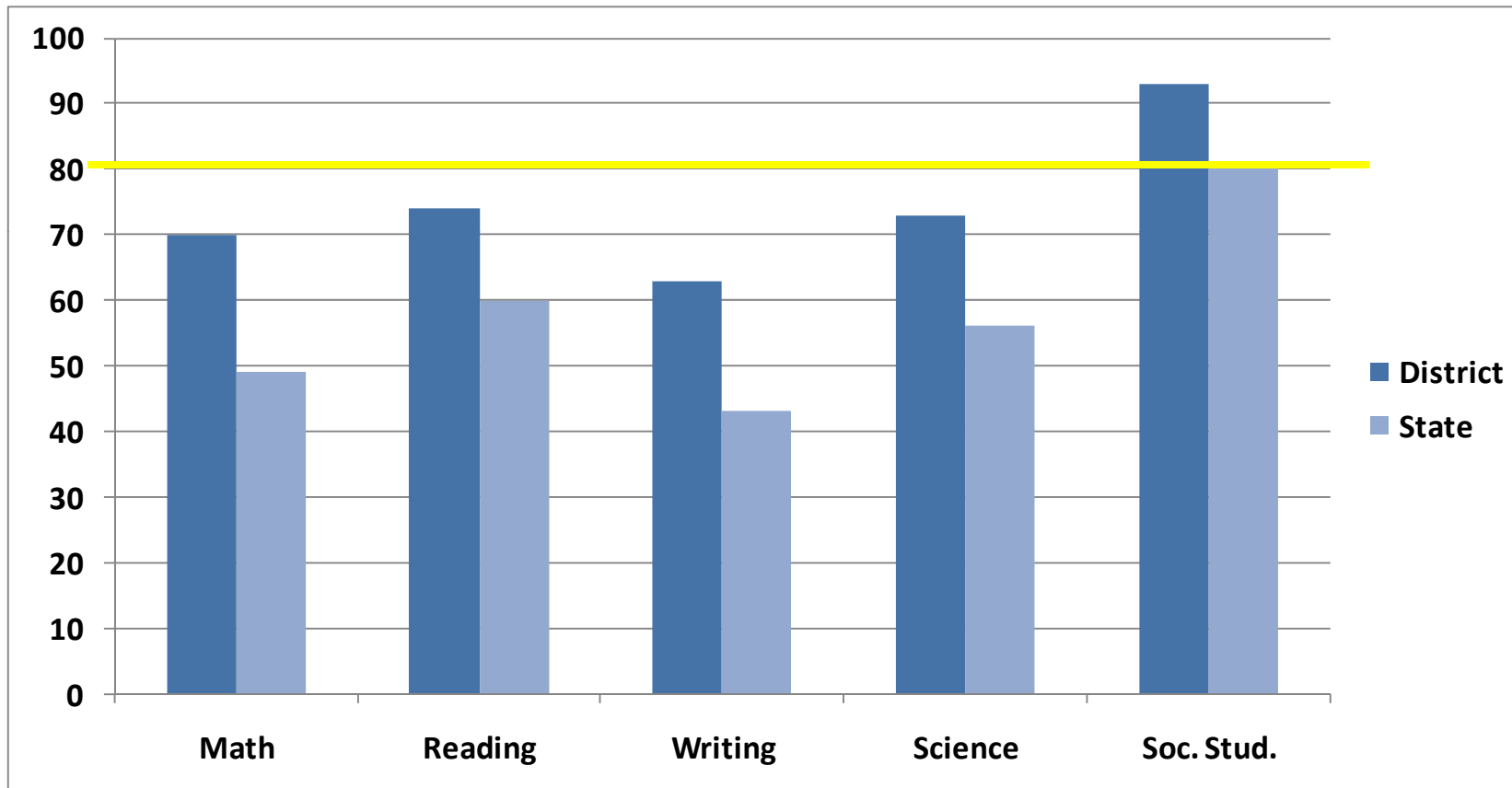
# Table of Contents

- Michigan Merit Exam (MME) Results
  - Core academic subjects
  - ACT results
- PPS Compared to Similar Schools
- Instructional Areas of Focus
- Graduation Rates – Class of 2008 Cohort
- Ed Yes!, Adequate Yearly Progress (AYP) and the 2008-2009 Michigan School Report Cards



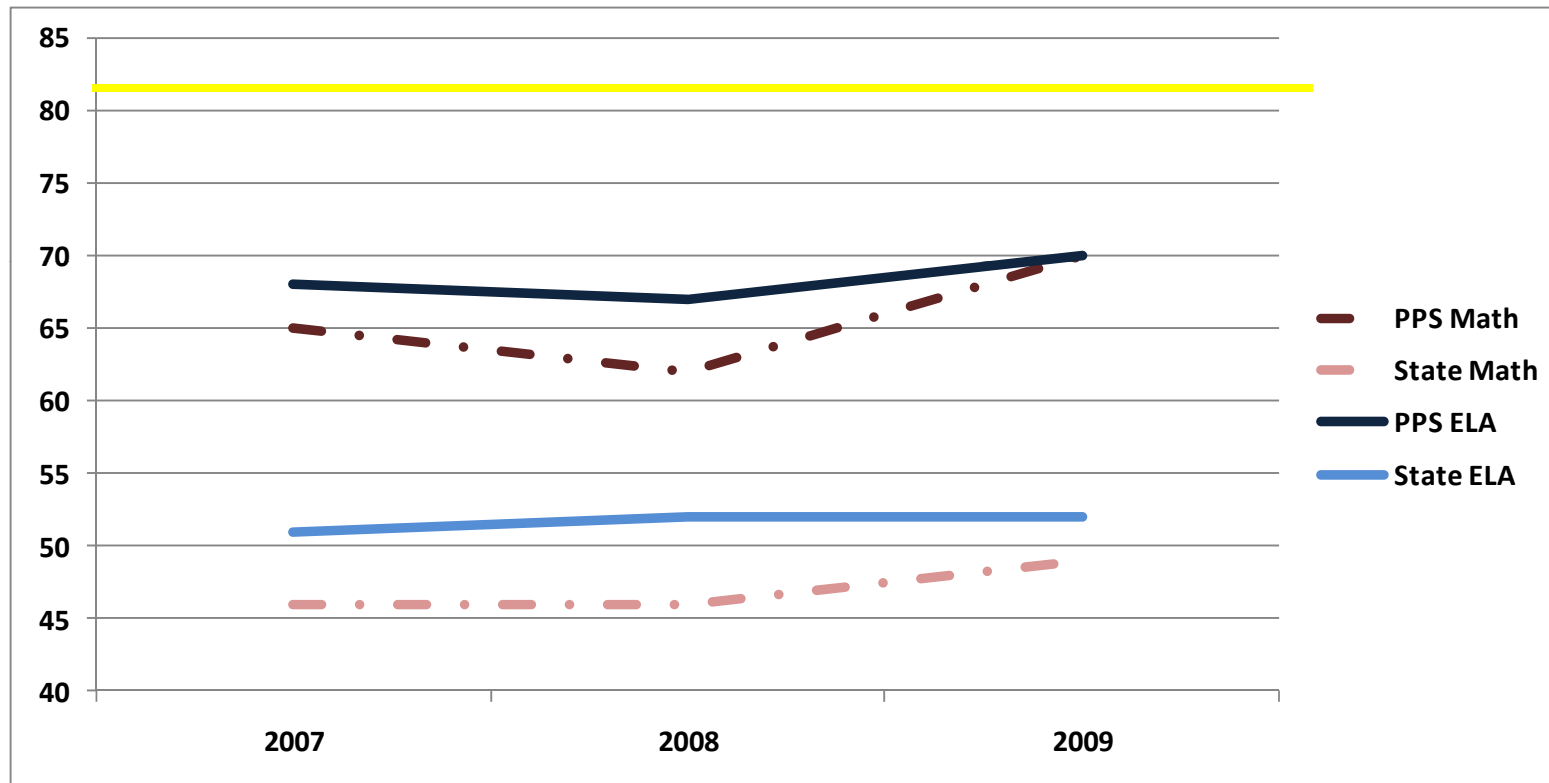
MME and ACT Data:  
Spring 2009

# Spring 2009 MME – Percent Proficient



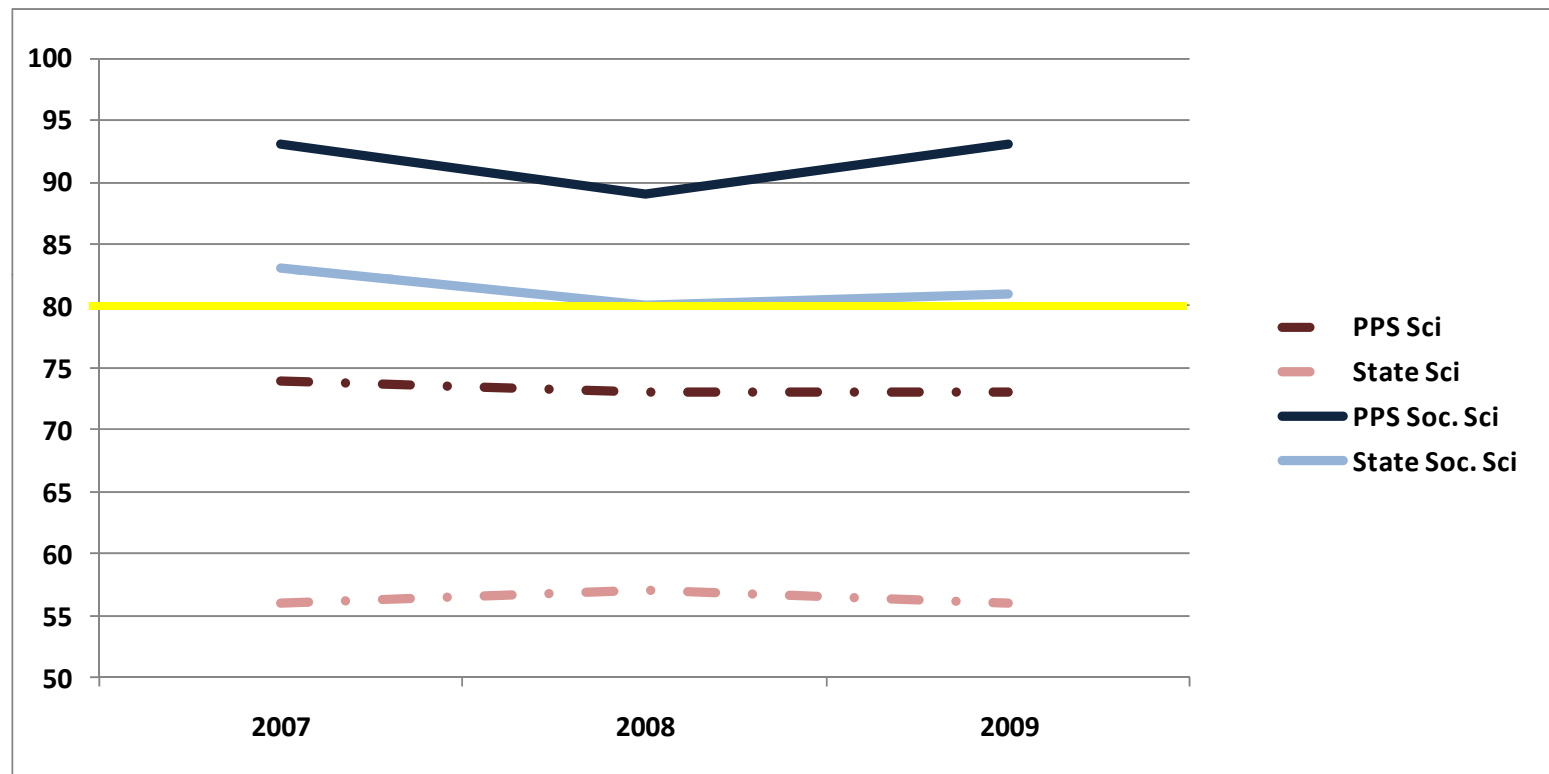
*The yellow line represents PPS's target minimum level of performance.*

# 2007-2009 MME Percent Proficient: Math and Reading



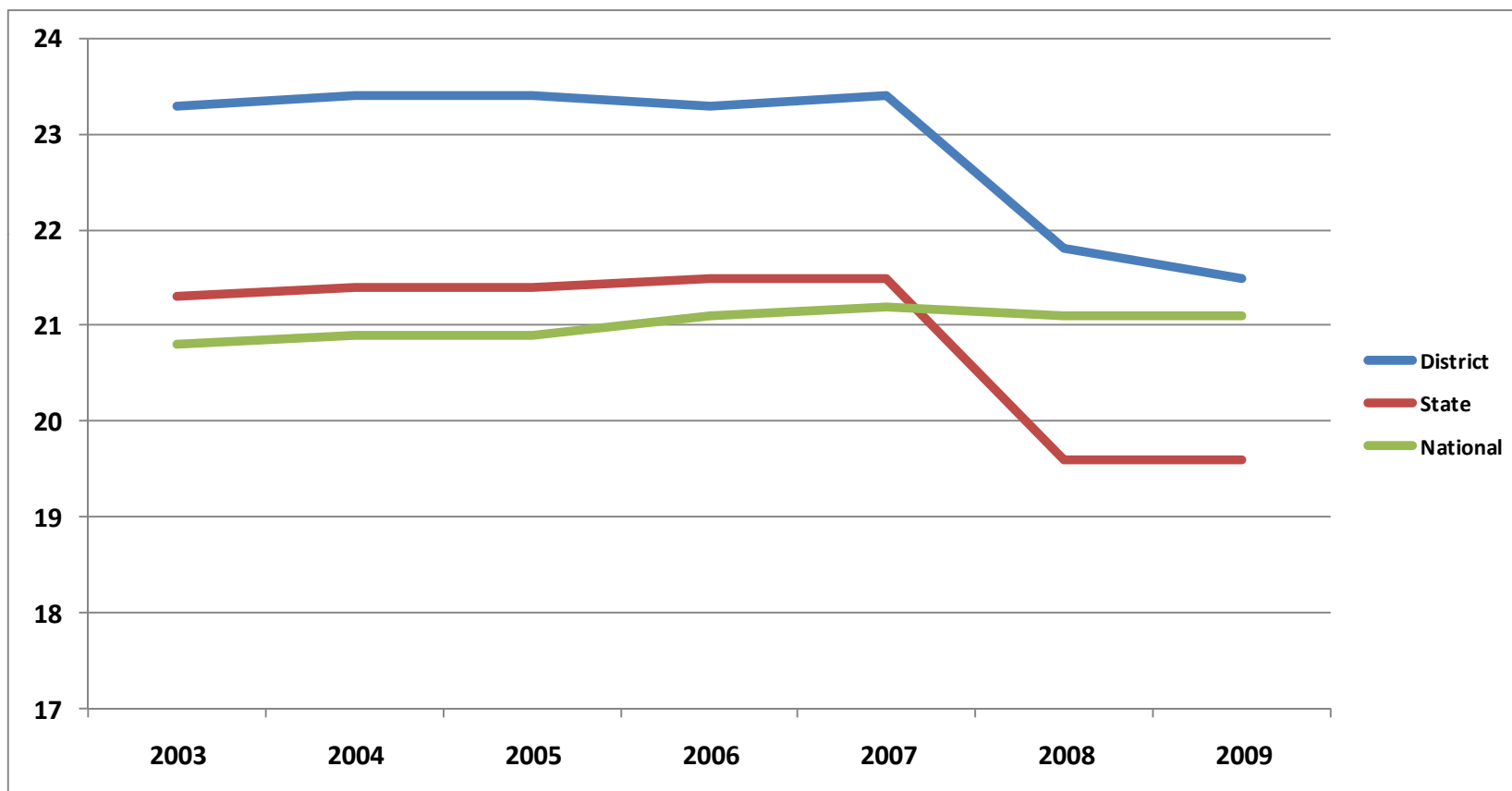
*The yellow line represents PPS's target minimum level of performance.*

# 2007-2009 MME Percent Proficient: Science and Soc. Sci.



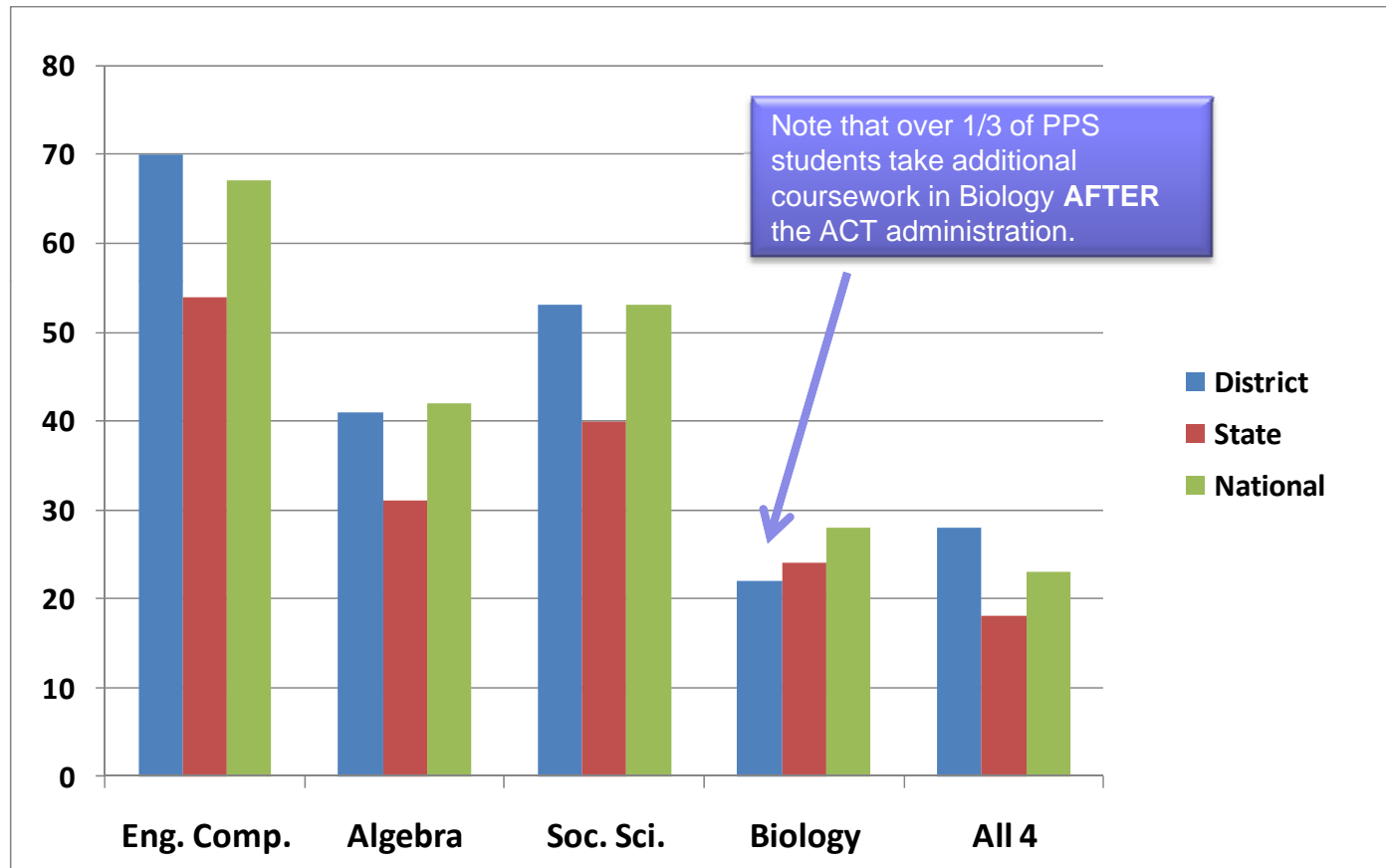
*The yellow line represents PPS's target minimum level of performance.*

# ACT Class of .... – Composite Score



Note that 2008 is the first year all students were tested. Prior to 2008, percent of students tested varied between 60-70%.

# Spring 2009 ACT- College Readiness *Predictions*



Numbers indicate percent of students ***predicted*** to be ready. English Composition is based on ACT English score, Algebra on math, Social Science on reading, and Biology on science.

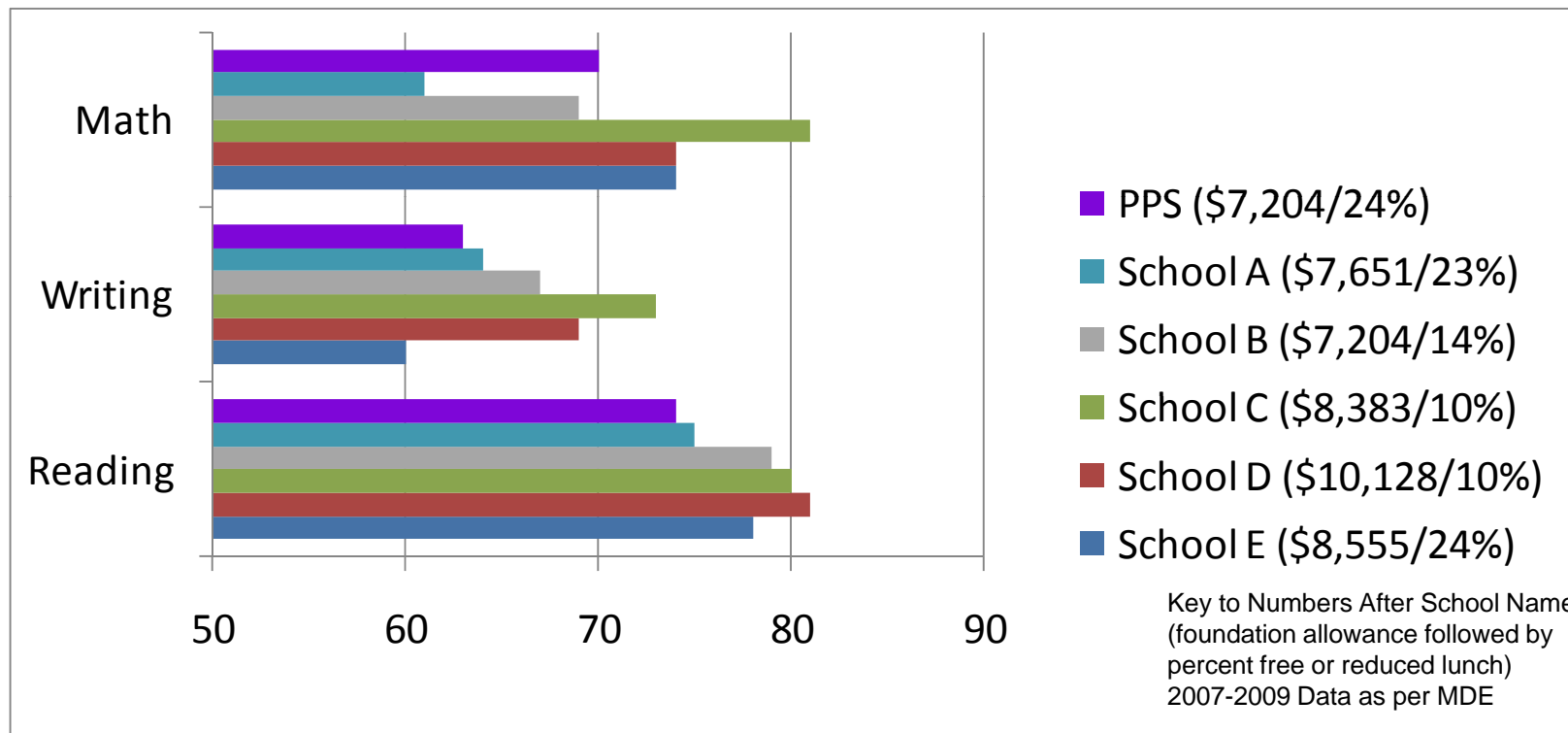
# Comparative Analysis:

Looking at PPS along with some of our peers

The following slides compare PPS scores in mathematics and ELA with five peer schools: Forest Hills, Grand Blanc, Grosse Pointe, Midland and Rockford. These schools were chosen due to their demographic and other similarities to PPS. On the following slides, the schools will be listed anonymously.

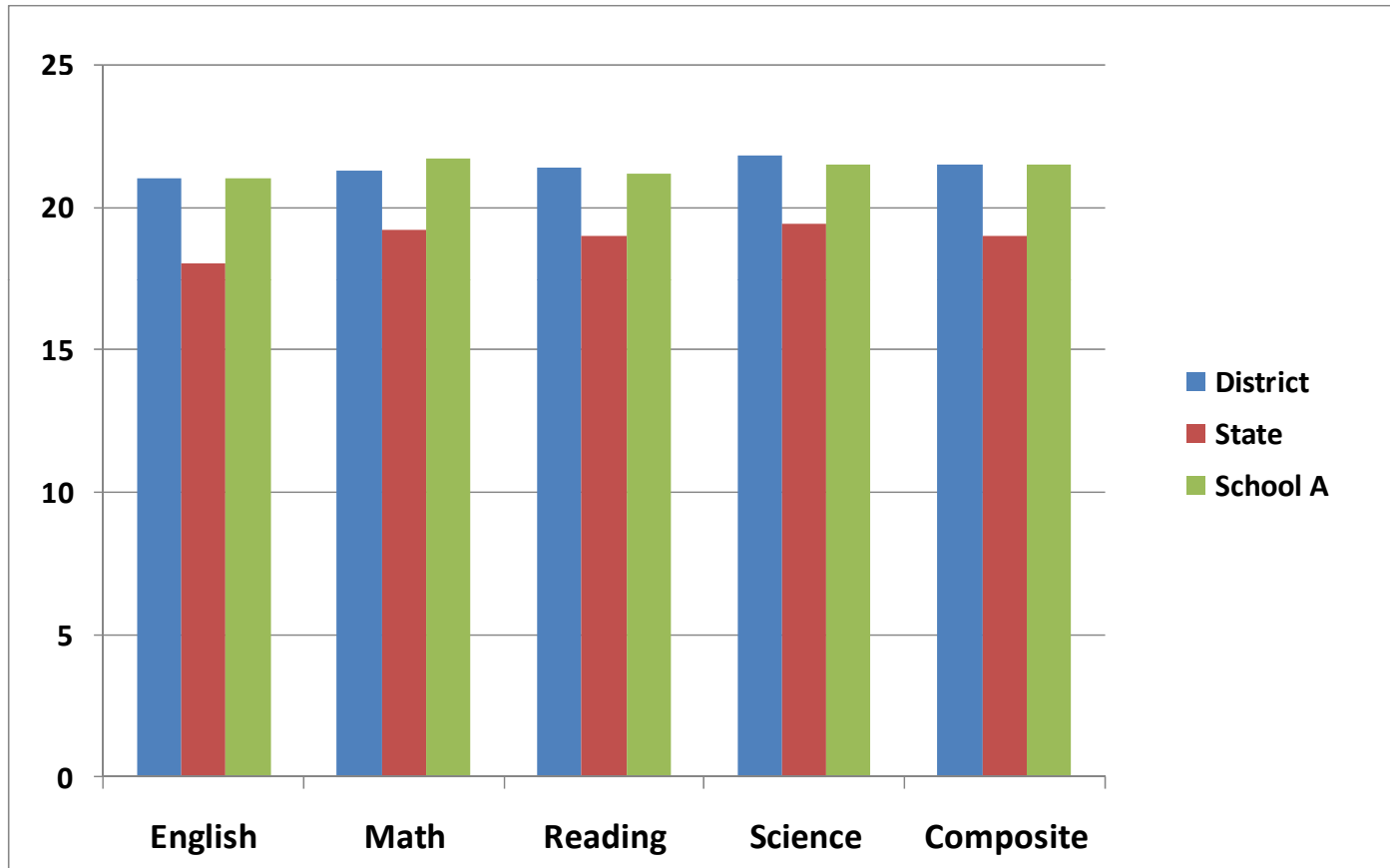
# PPS and Peers:

## 09 MME Percent Passing



# Spring 2009 ACT:

PPS, State, & "School A"



# Instructional Initiatives and Focus

## Implemented

- K-12 Writing Expectations and Assessments
- Core Curriculum (Y-5) that places higher emphasis on academics
- Mathematics Program (PreK-5), Assessments, and Professional Development

# Instructional Initiatives and Focus

## Ongoing

- Counseling Review Continues
- K-12 Social Studies Review Continues (due to state changes)
- K-12 Science Audit and Review Continues
- Kindergarten Study Committee Continues
- Elementary World Languages Exploration Continues
- Instructional Media and Technology Review Begins



Graduation Rates, Ed Yes! and  
Adequate Yearly Progress (AYP)  
Reports for 2008-2009

# Graduation Rate Calculations:

## Some Important Points

- Rates released in distinct four and five year cohorts, one and two years (respectively) after a class has graduated.
- Primary rates based on whether or not a student graduated on-time, not on whether or not he/she actually dropped out. (On-time is considered 4 years for most students.)
- We are required to prove each individual student's location and graduation date. This isn't always easy.

# Class of 2008 Graduation Cohort

Building	On-Time Grad Rate	Drop-out Rate*
Central HS	93.63%	4.99%
Northern HS	94.15%	2.46%
Community HS	25.37%	47.76%
PPS	83.23%	11.55%
State	75.50%	14.19%

\*Note: the drop-out rate includes students whose location is unknown, as well as those students who actually dropped out. If we cannot prove, to the State's satisfaction, the location of a student, she/he is treated as an unknown and included in the drop-out rate.

# 2008-2009 Ed Yes! & AYP Status

Building	Ed Yes! Grade	Met AYP?
Amberly EL	A	Yes
Angling EL	A	Yes
Central EL	A	Yes
Haverhill EL	A	Yes
Lake Center EL	A	Yes
Moorsbridge EL	A	Yes
Waylee EL	A	Yes
Woodland EL	A	Yes
Central MS	A	Yes
North MS	A	Yes
West MS	A	Yes
Central HS	A	Yes
Northern HS	A	Yes
Community HS	n/a	No

# Achievement Update:

*Spring 2009 High School Data & 08-09 Ed Yes!*

Presented to the  
Portage Public Schools  
Board of Education  
September 14<sup>th</sup>, 2009