

Woodland

NCA Accredited

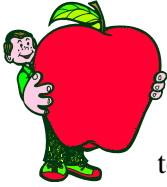
December 2009



Newsletter

1401 Woodland, Portage, MI 49024
(269) 323-6600
Sue O'Donnell, Principal
sodonnell@portageps.org

The staff and parents at Woodland school work cooperatively to develop the whole child in an atmosphere of respect and dignity



Dear Families,

The hustle and bustle of the holiday season is upon us! It is a time of sharing and caring. Many thanks go out to all of you who have helped us out in so many ways from working in the classrooms to the many donations, or words of support that have come our way. All are very much appreciated. Thank you PTO for your generosity and fund raising efforts. Following are a few articles of interest. Have a wonderful month!
Sue O'Donnell

WINTER BREAK

There will be no school from December 21, 2009 to January 1, 2010. School will resume on Monday, January 4, 2010. Remember also, that the semester ends on **January 29. There will be no school for students on that day!**

BUS AND WALKING EXPECTATIONS

As we prepare for winter, we request that you review our shared expectations for bus and walking-to-school behaviors with your children.

Please remind your children that while waiting for the school bus they are to arrive five minutes before the scheduled pick up time.

Children are to wait in a group at least 10 feet away from the edge of a roadway. Walkers need to stay on the designated route and be polite to the neighbors on their way to school. Children should not talk to strangers along the way. It is tempting when we are all gathered together to play and rough house but remind your children that not all drivers are watching for children. Encourage your son or daughter to create a safe environment by not running or chasing others. All elementary students know that snowballs

are not permitted....not even at the bus stop or on the way to school.

Whenever possible we encourage parents to help at bus stops. Your presence helps to create a safer environment and is a great way for our children to start their day.

REMINDER:

Please **DO NOT** park in the drop off lane in the morning. That lane is for quick drop off and moving only. We are having some problems with this and it tends to worsen during cold months. You may park in the outside drop off lane closest to the sidewalk for the afternoon pick up as long as it is not in front of the entry doors as that is a space reserved for day care vans, county buses etc. A little cooperation with this will speed things along tremendously during our busy arrival and dismal times.

REQUEST TO STAY INDOORS FOR RECESS

We believe that except on rare occasions, if a child is well enough to be in school they are well enough to go outside and enjoy recess. In addition, an adult must always be present to supervise a child staying in for recess, which takes away from staff lunch times and office staff duties. Therefore, a note from a physician stating the child is to remain indoors for recess is required for a child to be individually supervised during recess time. Thank you for your understanding and cooperation with this matter

DATES TO REMEMBER
Dec. 21-Jan. 1 ~ no school
Jan. 29 ~ no school
Feb. 24-25 ~ conferences
Feb. 26 ~ Mid winter break ~ no school
March 26 ~ no school

FALL PARENT-TEACHER CONFERENCES – The

Woodland Staff would like to express sincere thanks and appreciation to all of you who were able to participate in the fall conferences. We consider these conferences extremely important and we hope you found them to be most informative and helpful regarding the progress of your child/children so far this year. If there are any questions at any time regarding the progress of your child/children, please feel free to either call us or stop in for a personal visit.

MORNING NOTIFICATION OF SCHOOL CANCELLATION

When Portage Public Schools cancels school due to weather conditions or other emergencies, news media is notified by 6:00 a.m. School cancellation information is also available online and via the phone. To access school cancellation information online, visit the Portage Public Schools webpage at www.portageps.org, click on the “Parents & Visitors” box and then on the next page look for the school-closing link on the right hand side. This link will take you to the WWMT-TV website that posts school closings. District officials have found linking to the WWMT-TV website is the fastest method for families. *Families may also call the Portage Public Schools “School Closing Hotline” at 323-6800* for updates on school closure information. A message is recorded and updated at the same time news media is notified of closures.

Please note: Anytime the district cancels classes due to severe weather, all afternoon and evening activities in all Portage Public School buildings are also canceled.

Students
Need
Outdoor
Wear



DRESS FOR THE WEATHER &

LABEL STUDENT OUTERWEAR!

Winter weather has arrived and students need to dress for it! **Children should be wearing winter jackets, snow pants, boots, hats, and gloves or mittens to school.** PLEASE WRITE STUDENT NAMES INSIDE COATS, GLOVES AND BOOTS. We have many students with look-alike clothing and a multitude of items that end up in Lost and Found. Labeling clothing will assist us in returning lost outerwear to students.

Note: If the actual temperature or wind chill (not predicted) at recess time is below zero degrees we will have indoor recess. Please have children come to school dressed with the anticipation of spending a thirty-minute recess outside.

GYM SHOES

With children wearing boots, *please remember to send gym shoes on your child’s gym days.*

NEW MATH PROGRAM UPDATE

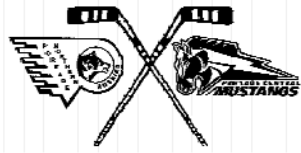
Early math literacy is critical to success at the next level and, ultimately, for post-secondary educational opportunities. This year Portage Public Schools implemented a new elementary mathematics curriculum supported by the program, Scott Foresman. As you know, whenever we are learning new skills in a different context, there is an adjustment period.

Teachers have been reflecting on the success of the implementation, as well as areas that students are struggling with relative to the new learning expectations and materials. We are very pleased with the success of our implementation and our students’ reactions to the new learning context.

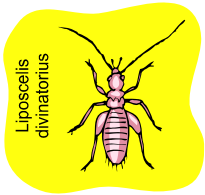
If you would like to know more about the program and how you can help your child in mathematics at home, you can contact your child’s teacher.

THE PORTAGE HIGH SCHOOL HOCKEY CLASSIC! - RESERVE THE DATE!

It's time again for the annual Portage Central vs. Portage Northern Hockey Classic! The big game will be held at Wing's Stadium on Monday, December 14th at 6:30 pm. High school hockey players visited elementary buildings during students' lunch hours on Thursday, December 10th. Students will be receiving paper pucks. These pucks will get them into the game **free!** Yes...free! Adult admission is \$5.00. KOHA players wearing their jerseys get in free! Don't miss out on this awesome event! There will be many prizes to win!



HEAD LICE



A very special thank you to the parents who have been doing head checks in an effort to eliminate this nuisance. We will continue to do periodic head checks as the year progresses and we do request your continued cooperation in checking your child/children's heads on a regular basis and keeping us informed of any new case of infestation.

**ANTICIPATED ABSENCES
DUE TO FAMILY VACATIONS**

Regular school attendance is basic to much of the success students attain. Daily teaching, interactions of students with teachers and peers, discussions, visual displays, etc. are a crucial part of academic work. *Parents/guardians who wish to have their child miss school for a family vacation should realize the classroom instruction students miss can not be duplicated.* It is difficult for teachers to provide students with make-up work prior to leaving for a vacation due to the need to vary the pace and presentation of instruction to meet the needs of learners who are in attendance. It is up to the teacher's professional judgement as to whether course work can be provided in advance for the units of instruction students will miss due to vacation. Teachers will provide students with work missed upon their return from vacation and may seek to teach the child concepts missed during lunch or recess periods.

**Do You Want To....
Receive a Holiday Food Basket?**

If you, or anyone you know, can benefit from receiving a Holiday Food Basket please contact the Portage Community Center at 323-1942. You must live within the Portage Public School District or the City of Portage and income qualify.

You may sign up Monday through Friday from 9 a.m. to 5 p.m. at 325 E. Centre – corner of Currier Drive. The deadline for a Christmas Basket sign up is December 18th.

THANK YOU!

The holiday season is often a time for reflection and giving thanks. There is much to be thankful for at Woodland School. Our staff is committed to teaching, and giving their best each day to our students. Our parents are involved, supportive and present in our school. Because of you so much good is happening here for students both before and after school, wonderful enrichment programs to advance student learning, fifth grade camp, field trips, activities and presentations for students, positive, proactive communication, and a safe and welcoming school environment. Thank you for joining hands to promote educational excellence for the students of Woodland Elementary School!



Media Center News

Volume XVI Number 5

December 1, 2009

Ask your third, fourth or fifth grade student about the pigeon hunt.

**Cell phones Cell phones Cell phones We can recycle old cell phones!!!!!!
Send your old phones in and we can earn cash for the Media Center.**



The Book Olympics bookmark competition ended in a tie by the second and third grades. It was a close battle all of the way with each grade with the lead see sawing back and forth. Congratulations to all the readers at Woodland for trying and turning in your bookmark.

Book Fair Update: Congratulations Woodland! Over \$3,000 in books was purchased at the book fair and we qualified for some nice bonus books from Scholastic. Your support of the Book Fair is most encouraging and the children have some great books to read over the holidays. With our profits we will order new books and replace some worn out ones! Thanks again to all our Woodland families. A special thanks to our volunteer parents who helped out.

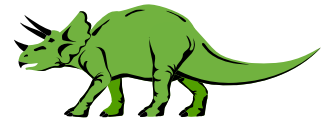
A way to help Woodland! The **Media Center** is collecting **empty printer ink cartridges** to be recycled. **Any cartridge** will work, ink jet or laser. **What to do?** Bring or send the cartridge in to the Media Center and place in the collection box. The Media Center will take care of the rest. What does Woodland get? Woodland will earn points or cash towards technology equipment. Best of all it does not cost anything and the rewards are great! Send in those cartridges! **(laser cartridges can be sent in with the original box)**



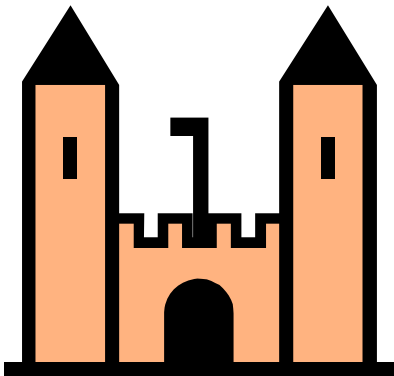
The **Media Center** has **many books** that are **missing** and we need your help in looking around the house for stray books. We are also doing a shelf check. Thank you for your help.

HINTS to avoid overdue books: Keep the books from school in a special place so that they can easily be found when needed. Make a note on the calendar which day is book exchange day. Remind your student that it is his responsibility to get the books back to school.

December is dinosaur month. We will be promoting books about dinosaurs and dinosaur stories.



Chess Club will start after **Christmas** break in **January**, watch for details.



The castle reading loft will be going up in December. Children will be able to come down during the day or during lunch recess to read quietly on the second floor. The students enjoy having a chance to go up and read in the castle. The castle is up only until spring break when it comes down to make room for Camp Read A Lot. Woodland has great readers and we like to see them read so many books.



HAPPY HOLIDAYS TO EACH OF YOU!