

# Central Connection

## Central Elementary School

Susan Roberts, Principal

April 2010



8422 S. Westnedge

Portage, MI 49002

(269) 323-6100

*“Learning and Growing with Commitment and Peace”*

### ENROLL NOW FOR KINDERGARTEN 2010

Please let us know if you have a child who will be eligible to enroll in school in September 2010. To be eligible for entry in school, a child must be **five years old on or before December 1, 2010.**

If you have a neighbor who has a child in this age group, please pass the word along that it is time to notify Central Elementary. Thanks in advance for your help.



### ARE YOU PLANNING TO MOVE?

If you will be moving out of the Central Elementary attendance area before school starts next fall, please call the office at 323-6100. This information is very helpful in planning class placements for the next school year.



### DRESS CODE

As summer approaches it becomes necessary to remind students of our school dress code. Very short shorts/skorts are not permitted, as well as spaghetti strap shirts or bare midriffs. Also, T-shirts that promote violence, profanity or inappropriate language will not be allowed. Clothing will not be permitted that is “revealing, suggestive or otherwise distracting.” Please help your child to make appropriate choices in clothing to wear to school.

### SIGN-UP FOR EMAIL UPDATES

The District offers a free list service for anyone who would like to get regular e-mail updates about Portage Schools, any of the individual schools, or about the two district foundations, The Portage Education Foundation and the Portage Athletic Foundation.



To sign-up, simply visit the District’s homepage at [www.portageps.org](http://www.portageps.org), and click on the box in the lower right corner. That will take you to a page allowing you to select the list service messages you would like. Once you subscribe, you will receive a confirmation alerting you that your order went through. Call 323-5000 with any questions.

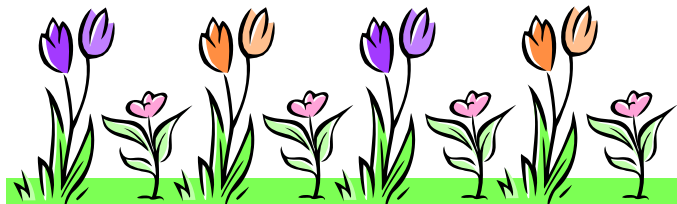
### SPRING PICTURES

On Thursday, April 21, Lifetouch Studios will be at Central Elementary for our spring pictures.

Please watch for more details to come home.



**Central Elementary is a  
place where children are  
safe and successful!**



## TARDINESS

Tardiness is a serious problem. School starts at **8:30 a.m.** It is very important that all students arrive at school on time. A great deal of preliminary instruction for the entire day is given at the very beginning of each school day. The tone is set for learning in the classroom.

According to Portage Public Schools Board Policy #5113:

*“Students are expected to arrive at school and follow their full assigned class schedules promptly. At the elementary level, a student who needs to leave early must be signed out in the main office by parent/guardian.”*

*Excessive tardiness may result in a disciplinary referral to the school administration. If chronic attendance problems persist, the building administrator will contact the county attendance officer and/or juvenile authorities for further assistance.”*

Students need to learn at an early age that punctuality and dependability are important assets to carry with them throughout their lives. Thank you for your attention to this important matter.

## LUNCH RECESS

With the arrival of spring, and the rainy spring weather, please **be sure your children dress appropriately for lunch recess.** All students are expected to participate in daily recess. Thank you for planning ahead for our Michigan weather!



## SCHOOL MEALS

**Did you know?** If you qualify for reduced priced meals you only pay \$ .30 for breakfast and \$ .40 per lunch! That's a savings of \$391 at the elementary level and \$436.00 at the middle and high school level over the course of the school year! If you qualify for free lunches, you won't pay anything at all! Students who participate in the Free and Reduced Meal Program provide extra state and federal funding for reading and math programs in their buildings.

**Free and Reduced Meal Benefit Applications can be filled out anytime during the school year. Applications are available through the school office, by calling 323-5155 or at [www.portageps.org](http://www.portageps.org)**

## RENEWAL OF BUILDING AND SITE SINKING FUND SOUGHT FOR SCHOOL REPAIRS AND IMPROVEMENTS

A renewal of the .5 millage rate for the District's Building Site Sinking Fund (BSSF) will come before voters on May 4. The average cost to taxpayers will be \$38 a year and generates about \$1.2 million a year. This renewal is for a period of five years, for school year 2010/2011 through 2014/2015.

The BSSF has been renewed consistently since 1966, with receipts from this levy going into a separate fund for such things as making necessary repairs and improvements to school buildings, structures, and parking areas. Since many of our facilities are nearly 50 years old, numerous facility repairs like roofs, mechanical systems, flooring, and asphalt have been funded with this millage.

From 1966 through 1998 the District levied 1.0 mill in this fund, and from 1998 to now, the District levied .5 mill of BSSF, while the other .5 was transferred to debt millage with voter approval. In 2001 voters approved an increase of 1.0 mill through 2005 for the construction of two multi-purpose facilities at the high schools and for major renovations to the high school auditoriums. Read the ballot language online: <http://www.portageps.org/departments/finance/BSSFlanguage22Feb10.pdf>

## PORTAGE PUBLIC SCHOOLS

Portage Public Schools is accepting applications for enrollment from non-resident students residing in a school district located in any contiguous intermediate district (outside of Kalamazoo County). At this time, enrollment is open for all grades and schools within Portage Public Schools District. Applications will be accepted until Sept.10, 2010.

Parents or guardians interested in submitting an application for enrollment under the provisions of this program for the 2010-11 school year must submit a completed Portage Public Schools School of Choice Section 105c application form to the Office of the Superintendent, 8111 S. Westnedge Ave, Portage, MI 49002. Please call 323-5148 for information on how to receive and process an application.