

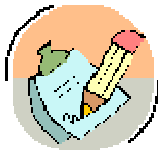
# WAYLEE RAP-UP



Waylee Elementary School  
8106 Waylee Street  
Portage, Michigan 49002  
Phone: 269-323-6500  
Fax: 269-323-6590

Mr. Ron Jones Principal

**December 2007**  
**January 2008**



## **DEAR PARENTS AND STUDENTS:**

On behalf of the Waylee Staff I would like to wish you and your family HAPPY HOLIDAYS! This school year is flying by. It is hard to believe that you're receiving the December/January Wrap-Up already! School will be closing at the end of the day on Friday, December 21st, for Winter Break, and will resume on Monday, January 7th. I encourage you to read the Wrap-Up in its entirety so that you will be aware of all the information and activities pertaining to your children.

I am pleased to see so many parents attending our PTO meetings this year and getting involved in our PTO. We would like to see even more of you. Our next PTO meeting is scheduled for Tuesday, January 8th, at 7:00 p.m. Please join us!

**TOYS NOT ALLOWED** – Just a reminder, at this time of year when children are excited about their new toys, please remember that toys are not allowed at school as they cause classroom interruptions. If children are bringing a special item for "show & tell", it is to remain in their bag/backpack for the remainder of the day.

**END OF FIRST SEMESTER** – Friday, January 25, 2008, there will be **no school** for students. This is the official end of our first semester and is a work day for teachers as they prepare report cards. Report cards will be sent home with students on January 28, 2008. Please sign and return the signature sheet so that we know that you have received your child's report card.

Thank you.

## **VISITORS**

Parents, if you would like to visit your child's classroom, you must stop by the office first to sign in and pick up your Visitor Badge. We also ask that you do NOT visit your child's classroom with younger siblings.

## **SEVERE WEATHER & SCHOOL CLOSINGS**

When severe weather causes school to be closed during the day, please remember the following procedures:

Radio stations and television stations (News 3 and Channel 8) are notified immediately, in order to alert parents that school closing is imminent. They also carry news in the evening concerning the following day.

Secondary students are dismissed first so that they are home when younger siblings arrive. Elementary buses do not arrive here for a minimum of 1-2 hours after the initial closing announcement.

Our students who walk home may be dismissed before the buses arrive, in order to let them get home before conditions worsen. We assign adult crossing guards only at Waylee Street when walkers are dismissed.

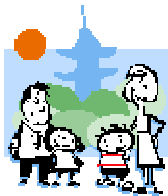
**DO NOT CALL THE SCHOOL.** We are unable to deliver last-minute messages at these times of emergency.

Please be certain that you review immediately with your children **WHERE THEY ARE TO GO IN THE EVENT OF AN EMERGENCY CLOSING**. You are welcome to pick up **YOUR OWN** children, but please don't try to pick up others.

## **SNOW DAY NOTIFICATION – MORE IMPORTANT INFO...**

When the school district closes for a snow day we not only notify the news media by 6 a.m., but we have that information available online and by phone. Visit our web site at [www.portageps.org](http://www.portageps.org) and click on the "Parents & Visitors" box and then on that next page look for the school closing link on the right-hand side. This link will take you to the WWMT-TV web site which posts school closings (we have found that this is faster than waiting until someone can reach the district administration building to post it ourselves). Also, you can call the **school district's "School Closing Hotline" at 323-6800**. This message is updated at the same time that we notify the news media of our closing. Also, note that when the district cancels classes for a snow day, that automatically cancels afternoon and evening events that take place in our buildings. Portage Cable Access, Channel 20, also posts school closing information.

*Ron Jones, Principal*



Please let us know if you have a child who will be eligible to enroll in school in **August of 2008**. (To be eligible for entry in school, a child must be **FIVE YEARS OLD ON OR BEFORE DECEMBER 1, 2008**.)

If you have a neighbor who has a child in this age group, please pass the word along that it is time to notify Waylee School. Thanks for your help!

**RECESS--INDOORS OR OUT??**

We do check the temperature and the wind chill index each day. We believe that children need to go outside daily. We consult a wind chill chart and children DO go out for 28 minutes each day when the temperature is at least 0. When we are close to the “danger” zone, the younger children are kept in and the older ones (3<sup>rd</sup>-5<sup>th</sup>) are given a choice of staying in or going out for recess. On some occasions the condition of the playground is such that we do not send the children out. You can help! **Please send your children to school dressed for the weather! An extra pair of socks that “live” here at school also come in handy when feet get wet. With proper clothing, children enjoy the time to play with friends and run around.**

### **WRITING – FOCUS CORRECTING**

Your child will be doing a great deal of writing this year. Frequent writing is essential to your child’s language development. We will be doing a lot of journal writing and quick-writes we call Type One and Type Two writing. We will also do more formal writing, which will be stories and other compositions. We call these pieces of writing Type Three and Type Four.

A special feature of Type Three and Four writing is focus correcting. On each piece of writing, we will concentrate on a few aspects of writing such as end punctuation or reasons to support a point of view. We call these focus correction areas (FCA). Focus correcting is based on the belief that student writing improves more quickly when the student works to improve a few writing skills at a time. The focus

correction areas are always discussed and taught before writing begins, and you will know immediately what they are because they are written at the top of your child’s paper. When you see *FCA* written at the top of your child’s papers you will know what is being emphasized in that piece of writing.

### **HEADCHECKERS**

Our wonderful, faithful head checkers have done a great job of alerting us to the few cases of head lice we have had this year. A big thank you to the parents and our visiting nurses who have done this job. Our head checks are being done on Tuesdays, usually the first week of each month now.

### **WAYLEE YEAR BOOK PICTURES**

Yearbook needs your pictures! If you have extra prints of school activities such as Halloween, Holiday Parties, etc., please send them to school in an envelope marked “Yearbook”. Pictures will not be returned, so please only send copies that you wish to share. Thank you!

### **From the Food Group –**

The Portage Public Schools Food Group is concerned about the health of children. We are taking steps to help in the fight against childhood obesity. As you look at your menu, you will see that we list the weekly averages for that week’s menu. That means that if your child eats school lunch each day and selects a variety of items, they will eat approximately the average nutrition listed.

We have also taken the step to analyze our snack items against seven different nutritional standards (including calories, total fat, saturated fat, sodium, sugar content, fiber, and four minerals). If the snack does not meet at least five of those standards, we will not serve them in the elementary schools.

Thanks - Lance Gerry

### **NEED HELP WITH HOMEWORK NOW???**

You can get live help with homework online! Go to [www.portagelibrary.info](http://www.portagelibrary.info). Enter your grade level and the subject you need help with: Math, Science, Social Studies, or English. Connect to a qualified tutor in the *Online Classroom* for up to 20 minutes of live help! Tutors are available 7 days a week from 3:00 p.m. to 10:00 p.m.

### **EMERGENCIES SOMETIMES HAPPEN**

We need to have up-to-date information at school. Please be sure to keep the school informed if emergency contact people or phone numbers change.

### **JUST A REMINDER...**

Parents please check out our Lost & Found Bins, located outside the office, in the front lobby. Next time you are here at school feel free to dig through to find any of your child's missing belongings. There are several coats and sweatshirts in the bins just waiting for their owners to come and claim them. It would be easier to find the owners if you would label your child's belongings that come to and from school.

### **DO YOU DO BABYSITTING IN YOUR HOME?**

We are in the process of updating our babysitting list that we give out to parents needing that service. If you would like to be included on this list, please stop by the office or send us a note with your name, address and telephone number. You may also include what ages you are excepting and whether or not you do babysitting during breaks and during summer.



### **Secondhand Smoke Harms Children**

**Lisa Negler, M.D.**

**Bronson Rambling Road Pediatrics – Oshtemo**

Do you or a family member smoke? If so, you may want to reconsider lighting up that cigarette around your child. Secondhand smoke is more harmful to children than you may realize.

In addition to the usual complaints of tobacco smoke – the odor in your clothes, hair, home and car, as well as eyes and nose irritation – over 4,000 chemicals have been identified in secondhand smoke. At least 43 of these chemicals cause cancer. Maternal smoking has also been linked to SIDS deaths in infants.

While secondhand smoke is dangerous to everyone, fetuses, infants and children are at most risk. This is because secondhand smoke can damage developing organs, such as the lungs and brain.

Exposure to secondhand smoke has been shown to decrease lung efficiency and impairs lung function in children of all ages. Chances of developing childhood asthma increases as does its severity. Secondhand smoke can also increase the number of colds and sore throats for your child.

Secondhand smoke also has a negative effect on your child's ears. Exposure to secondhand smoke increases both the number of ear infections your child will experience and the duration of the infection. Ear infections are the most common cause of children's hearing loss.

Not only does secondhand smoke harm your child's development, it also increases the risk for cancer. Secondhand smoke causes more than 3,000 non-smokers to die of lung cancer each year. These facts are quite alarming, but you can stop your child's exposure to secondhand smoke right now.

#### What Can You Do To Help Your Children Avoid Secondhand Smoke

- Stop smoking, if you smoke. If you don't smoke, don't start. Talk to your healthcare provider about possible medications that could help you quit, such as nicotine patches, gum, etc. There are also many community resources available to help you kick the habit:
  - "Choose to Be Tobacco Free" tobacco cessation class: (269) 341-6729
  - Quick Kit to Stop Smoking: (269) 341-6729
  - American Heart Association: 800-AHA-USA1
  - American Cancer Society: 800-ACS-2345
- If someone in your home smokes, help them stop. If that does not work, ask them to smoke outside of your home.
- Do not allow smoking in your car.
- Make sure your children's schools and daycare facilities are smoke-free.

This article is brought to you by The Children's Hospital at Bronson, southwest Michigan's only children's hospital, and Kohl's. For more information about children's health, visit [bronsonhealth.com](http://bronsonhealth.com).

*Dr. Nagler is at Bronson Rambling Road Pediatrics Oshtemo, 5629 Stadium Dr., Kalamazoo. She may be reached at (269) 372-1000 and is accepting new patients.*



1011 W Maple St      Girl Scouts of Glowing Embers Council  
Kalamazoo, MI 49008      Phone 269-343-1516      Fax 269-343-0370  
[mjlong@gsgcec.org](mailto:mjlong@gsgcec.org)

*"Girl Scouting builds girls of courage, confidence, and character who make the world a better place."*

*Michelle Jackson-Long*

Girl Scouts of Glowing

**Do You Know . . .**  
About Staphylococcus Aureus or MRSA Infection?

## Answers to some common questions about Staph and MRSA

### What is Staphylococcus aureus, also called Staph?

Staph is a type of bacteria. It may cause skin infections that look like pimples or boils. Skin infections caused by Staph may be red, swollen, painful, or have pus or other drainage. Some Staph, known as Methicillin-Resistant Staphylococcus aureus, or MRSA, are resistant to antibiotics, making it harder to treat.

### Who gets Staph infections?

Anyone can get a Staph infection. People are more likely to get a Staph infection if they have:

- Skin-to-skin contact with someone who has a Staph infection
- Contact with items and surfaces that have Staph on them
- Openings in their skin such as cuts or scrapes
- Crowded living conditions
- Poor hygiene

### How serious are Staph infections?

Most Staph skin infections are minor and may be easily treated. Staph also may cause more serious infections, such as infections of the bloodstream, surgical sites, or pneumonia. Sometimes, a Staph infection that starts as a skin infection may worsen. It is important to contact your doctor if your infection does not get better.

### How are Staph infections treated?

Treatment for a Staph skin infection may include taking an antibiotic or having a doctor drain the infection. If you are given an antibiotic, be sure to take all of the doses, even if the infection is getting better, unless your doctor tells you to stop taking it. Do not share antibiotics with other people. Do NOT save them to use later.

### How do I keep Staph infections from spreading?

- Wash your hands often or use an alcohol-based hand sanitizer
- Keep your cuts and scrapes clean and cover them with bandages
- Do not touch other people's cuts or bandages
- Do not share personal items like towels or razors

If you have questions about your condition, please ask your doctor.

For more information, please visit: [http://www.cdc.gov/ncidod/dhqp/ar\\_mrsa\\_ca.html](http://www.cdc.gov/ncidod/dhqp/ar_mrsa_ca.html)



## GIRLS ON THE RUN COACHES NEEDED:

Coaches are needed to lead a team of our third through fifth graders during Girls on the Run (GOTR) March through May. GOTR is a national program that offers a life-changing curriculum. The program combines self-esteem enhancing, uplifting workouts with training for a 5k run/walk celebration event and is in its fourth year of existence in the greater Kalamazoo area.

Great Kalamazoo GOTR provides comprehensive training for coaches who will lead the girls in lessons that are intended to reduce the incidences of low self-esteem and depression, negative body image that sometimes results in serious eating disorders, high risk behaviors such as smoking, underage drinking, use of illegal drugs and early onset of sexual experiences, and violent crimes. Each lesson is accompanied by a running activity and work out designed to enhance the girls' overall physical health as well.

This after school program will be offered to 30 girls two afternoons per week of 9 weeks beginning the week of March 17, 2008. Coaches must be available to attend one day of Girls on the Run Training in March and become first aid and CPR certified. GKGOTR is a collaboration of many area businesses, agencies, organizations and individuals who are committed to the health and well being of our area's children. Donations, sponsorships, participant fees and in-kind contributions from several sources make it possible to continue to bring this program to Kalamazoo.

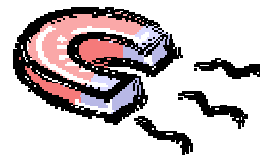
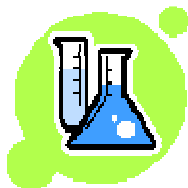
If you are interested in learning more about how you can be a part of Girls on the Run, please contact Connie Stoll @ 323-6575.



## **Student Directory Opt Out**

Portage Public Schools occasionally provides student directories to organizations such as Parent Teacher Organizations, colleges and libraries offering special programs to school age children, and political action committees. This information may include the student's name, address, telephone number, email address, date of birth, parent/guardian name(s), honors, activities, and awards, grade level, and dates of attendance. Parents wishing to opt a student out of directory listings should contact the main office in writing to request omission. Please note – exercising this right will exclude this information from all external requests for directory information, including P.T.O.'s. It will not impact the inclusion of information in school publications such as yearbooks, school newspapers, extra-curricular programs, etc. If you wish your student's information excluded from these publications as well, please contact the school's main office.

## **Science Night 2008 at Waylee Elementary**



You are invited to the Waylee 2nd Annual Science Night on Friday, February 8<sup>th</sup> from 6-8 p.m.

- This is a **FREE** family event.
- Taco Bob's will be serving dinner (several items available for purchase) starting at 5:30 in the Waylee cafeteria.
- There will be 10 hands-on experiments for children of all ages.
- Experiments sponsored by: Pfizer, Portage Central IB Students and WMU Chem Club.

- The list of experiments hasn't been finalized yet, but here is a list of some of the experiments we had available last year. Static Electricity, Magnetic Station, Disappearing Ink, Silly Putty, Slime, Super Absorbent Polymers, Kitchen Chemistry, Dancing Milk, Iron in Cereal, Paper Chromatography and the World of Freeze.

## HOCKEY GAME

**It's time again for the annual Portage Central vs. Portage Northern Hockey Classic! The big game will be held at Wing's Stadium on Monday, December 3<sup>rd</sup> at 6:30 p.m. High school hockey players will be visiting elementary buildings during student's lunch hours on Thursday, November 29<sup>th</sup>. Students will be receiving paper pucks. These pucks will get them into the game free! Yes...free! Adult admission is \$5.00. KOHA players wearing their jerseys get in free! Don't miss out on this awesome event! There will be many prizes to win!**

