

Woodland



Newsletter

NCA Accredited

May/June 2010

1401 Woodland, Portage, MI 49024

(269) 323-6600

Sue O'Donnell, Principal
sodonnell@portageps.org

The staff and parents at Woodland school work cooperatively to develop the whole child in an atmosphere of respect and dignity



PRINCIPAL'S CORNER

Dear Families:

I can hardly believe that summer days are quickly approaching and the school year is nearing its end. I want to thank all of you for your generous support of Woodland, our staff, students, and me this year. Our parent volunteers have been just outstanding.

We cannot even begin to express our thanks to the PTO for all of their hard work and support. It is a generous, hardworking, and fun organization. If you would like to get more involved in school 'goings ons' next year, I would encourage you to join the PTO.

As we close this school year, I know many of you are already starting to think about next year. Maybe you have a fifth grader who is moving up to middle school or a little one who is about to take that first big step into kindergarten, or your family is transitioning to a new school. It's all a new beginning and we are there to support you along the way. Please take a moment to read about the 'news' at Woodland. Have a wonderful summer.

Sue

SUMMER NOTIFICATION OF CLASS PLACEMENT

Woodland families will be notified of their child's class placement via the mail in mid August. Also in August, please check the Woodland website for supply lists.

ARE YOU MOVING??

As we attempt to estimate the number of classrooms we need at specific grade levels for the 2010-11 school year, it is imperative that we maintain an accurate count on students we will have enrolled at Woodland Elementary for the upcoming school year.

If you are aware that you will be moving from the Woodland attendance area next year, please contact the school office at 323-6600 as soon as possible.

2010-11 KINDERGARTEN PAPERWORK DUE!!

If you have a child entering kindergarten or Young 5's in the fall, please turn his/her paperwork in as soon as possible. Thank you to those who have already done so. The office will remain open until June 11.

DATES TO REMEMBER

May 4	Election Day
May 7	Mother/Son event
May 11	PTO meeting 7:00
May 31	Memorial Day ~ no school
June 4	Last day of school
	Full day ~ dismissal 3:47

END OF THE SCHOOL YEAR REMINDERS:

The school year is quickly coming to an end and there are many tasks that need to be taken care of before we say goodbye for summer vacation.

- ✓ No cash refund will be made for balances on food service accounts. Balances remaining will be carried over the upcoming school year.
- ✓ Any medication housed in the school office must be picked up by parent/guardian by June 4. After this date, medication remaining in the school office will be properly disposed.
- ✓ If a new family moves in your neighborhood over the summer, please encourage them to register their children for school as soon as possible at the Administration Building on South Westnedge Ave.
- ✓ Flip flops should not be worn to school on gym days and/or outside at recess time.

DRESS CODE

As summer approaches it becomes necessary to remind students of our school dress code. As you know, kids grow over the winter. Clothes that fit fine last summer may be too short or tight this year. Very short shorts/skorts are not permitted, as well as spaghetti strap shirts or bare midriffs. Shirt straps should be at least 1". As our older students enter into puberty, short or tight clothing can become distracting. Also, T-shirts that promote violence, profanity or inappropriate language will not be allowed. Clothing will not be permitted that is "revealing, suggestive or otherwise distracting."



STUDENT DIRECTORY OPT OUT

Portage Public Schools occasionally provides student directories to organizations such as Parent Teacher Organizations, colleges and libraries offering special programs to school age children, and political action committees. This information may include the student's name, address, telephone number, email address, date of birth, parent/guardian name(s), honors, activities, and awards, grade level, and dates of attendance. We also provide contact information for those students who may benefit from targeted programs to other educational and community partners offering supplemental educational programming and services. Parents wishing to opt a student out of directory listings should contact the main office in writing to request omission. Please note – exercising this right will exclude this information from all external requests for directory information, including P.T.O.'s. It will not impact the inclusion of information in school publications such as yearbooks, school newspapers, extra-curricular programs, etc. If you wish your student's information excluded from these publications as well, please contact the school's main office.

VOTE ON TUESDAY, MAY 4

Renewal of Building Site Sinking Fund (BSSF) Sought for School Repairs & Improvements

Voters will see a renewal of the .5 millage rate for our Building Site Sinking Fund (BSSF) on the May 4 ballot. The average cost to taxpayers is \$38 a year and will continue to generate about \$1.2 million a year. This renewal is for a period of five years, for school year 2010/2011 through 2014/2015.

The BSSF has been renewed consistently since 1966, with receipts from this levy going into a separate fund for necessary repairs and improvements to school buildings, structures, and parking areas.

From 1966 through 1998 the District levied 1.0 mill in this fund, and from 1998 to now, the District levied .5 mill of BSSF, while the other .5 was transferred to debt millage with voter approval. In 2001 voters approved an increase of 1.0 mill through 2005 for the construction of two multi-purpose facilities at the high schools and for major renovations to the high school auditoriums.

We're Older Than You Think,

and we continue taking care of our older schools.

Our buildings that are more than 40 years old not currently being replaced or renovated by the current

Bond Construction projects include:

Administration Building: 88 years old

Central Middle: 53 years old

Amberly Elementary: 50 years old

North Middle: 49 years old

Haverhill Elementary: 48 years old

Angling Road Elementary: 47 years old

Woodland Elementary: 42 years old

Central Elementary: 41 years old

The ballot language can be read online at:

<http://portageps.rog/departments/finance/BSSFlanguage22Feb10.pdf>

PETS ON SCHOOL GROUNDS

Spring has arrived and many of our four-legged friends are ready to be outside. While many people love animals at Woodland Elementary School, we need to be sensitive to those who have allergies and/or may fear animals. All pet visits to school must be pre-approved by the teacher to insure student safety and that no child will have their health put at risk due to an animal allergy. In addition, our students vary in their comfort levels with animals. All pet visits must be pre-approved by the classroom teacher. Also, please do not bring your pet into school when dropping off or picking up your child. You and your pet are welcome to wait for your child by the grassy area.

**Woodland families!!
Thank you for all your
support!!!**

CALLING ALL PARENTS



Do you want your student to ride the school bus next year? Do you want to save time and money and help the environment at the same time?

In order for Portage Public Schools to provide a safe and orderly bus ride, we require all parents to register their students for bus service.

Portage students will ***not*** be scheduled for bus service unless the parents/guardians notify the transportation department in writing. You may sign up online after May 1 at www.portageps.org; or you may download the form at http://www.portageps.org/departments/transportation/requestform/transportation_requestform.pdf and submit it to the transportation office via fax, mail or your students bus driver.

If you do not have internet access, you may obtain a Transportation Request form at any Portage school or transportation office.

As a reminder, all students may be expected to walk up to 1½ miles to school. Elementary students may walk up to ½ mile to a bus stop and middle & high students may walk up to 1 mile to a bus stop wherever appropriate walkways and traffic signs are available. Eligible students signing up for transportation will be assigned to bus stops based on their home address.

If you would like your students to ride the bus next year, please sign up early. Bus assignments will be based on the student's home address as listed on the schools records. Students signing up by June 30 will receive a postcard in late August with specific transportation information.

Students not replying by June 30 may compromise our ability to provide timely bus service in the fall.

For more information, please ask your bus driver or call Transportation at 323-5151. Thank you in advance for your timely responses.

**PORTAGE EDUCATION FOUNDATION
LAUNCHES PEF NOW APPEAL**

The Portage Education Foundation (PEF) has been established PEF Now. When the legislature cut school funding in the fall, community members were asked for suggestions on how to address our school funding crisis. One comment heard repeatedly was those individuals were willing to make donations to Portage Public Schools. That's when PEF decided to start PRF Now.

Since the 2002-03 school year, PPS has cut \$5 million from its budget. While PPS has made every effort to prevent cuts from impacting its instructional services, the district cannot continue to provide an outstanding education without financial support. Our schools are no longer receiving sufficient support from Lansing.

Many may question how we can guild new schools when we are in a funding crisis. These are actually two separate issues. By law, monies raised from a bond initiative cannot be used for classroom activities or teacher salaries. The bond was ear-marked for new schools, renovations and improved technology. Bond monies cannot be used to pay operational expenses.

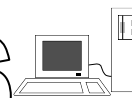
We are asking PPS parents and alumni as well as local homeowners and area businesses – everyone who shares an essential role in the success of our public school system – to participate in this appeal. Our goal is to raise \$1.3 million, what was cut from our budget in the fall of 2009. we are requesting \$30/month, which is the equivalent of approximately \$1/day, less than the average coffee or soda. We hope that every family and area business will contribute to the extent that they can.

Invest in the future of Portage. Working together, we can help PPS continue to offer an outstanding education to our students – an education not possible with public funding alone.

Please visit our website at www.portageeducationfoundation.org today to learn more about this appeal and/or to make a donation.



Media Center News



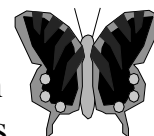
Volume XVI Number 9

May 1, 2010

The Media Center wants to give a big **THANK YOU** to all of our volunteer helpers. You have helped the Media Center have a great year. We look forward to your return next year and make it the best year ever. We are also **looking for new volunteers in the fall**. Watch for the sign up sheet on the first day of school. If you would like to help as a media helper please let me know or contact the PTO.

Overdue books are still a problem. Take time to look around the house for any missing books your student may have and please get them returned as soon as possible. We have over 600 books out that are overdue.

Name that Book game has been a fun challenge for the students in grades 2 through 5. Each grade level is in a tight race and no school champion has been announced. It is still too close to call as classes play each week; lead changes hands as often as each round progresses. Ask your child about this activity that is held in the Media Center in honor of National Library Week in April.



Camp Read A Lot is a hit with the students! Each student in second through fifth grade is busy reading books and filling out a back pack record or a Passport of his efforts. I will have many visitors to the tent that will be in the Media Center. I also hope to see more students come down to read. Keep reading Woodland!

Congratulations are due to the students and parents who participated in the book sale! Over \$2000 in books were purchased for summer reading. Again thank you for all the support. We want to give Mrs. Griesbach a special thank you for volunteering to coordinate all our volunteers and spending Wednesday night helping out with the Book Fair. *Thank You!*

Chess Club had our last meeting April 21st; we have concluded play this year. We had over 30 students playing chess at this year. Students may also come to the Media Center to play chess during indoor recess. They will need to bring a partner to play against.



Have a **Super Summer** and keep on **reading!**