



## **END OF SEASON LEAGUE JAMBOREE**

**WHEN: WEDNESDAY OCTOBER 12 AT 3:45 OR SO!**

**WHERE: KVCC**

**(see directions below)**

**WHO: HILLSIDE, LINDEN GROVE, MAPLE STREET,  
MATTAWAN, MILWOOD, PORTAGE CENTRAL, PORTAGE NORTH,  
AND PORTAGE WEST**

**WHY: TO CELEBRATE RUNNING AND A HAVE A GREAT  
FINISH TO A GREAT CROSS COUNTRY SEASON**

GAZELLE SPORTS WILL BE SUPPLYING RACE AND FINISH LINE SOUND AND  
COURSE EQUIPMENT

BRIAN MCDANIEL AND HIS CREW WILL BE DOING THE TIMING AND FINISH  
LINE WORK

Directions to KVCC

take exit 72 off I-94 go south on 9<sup>th</sup> street to campus.

Parking on the main campus parking. There is additional parking along 8<sup>th</sup>  
street. See Map

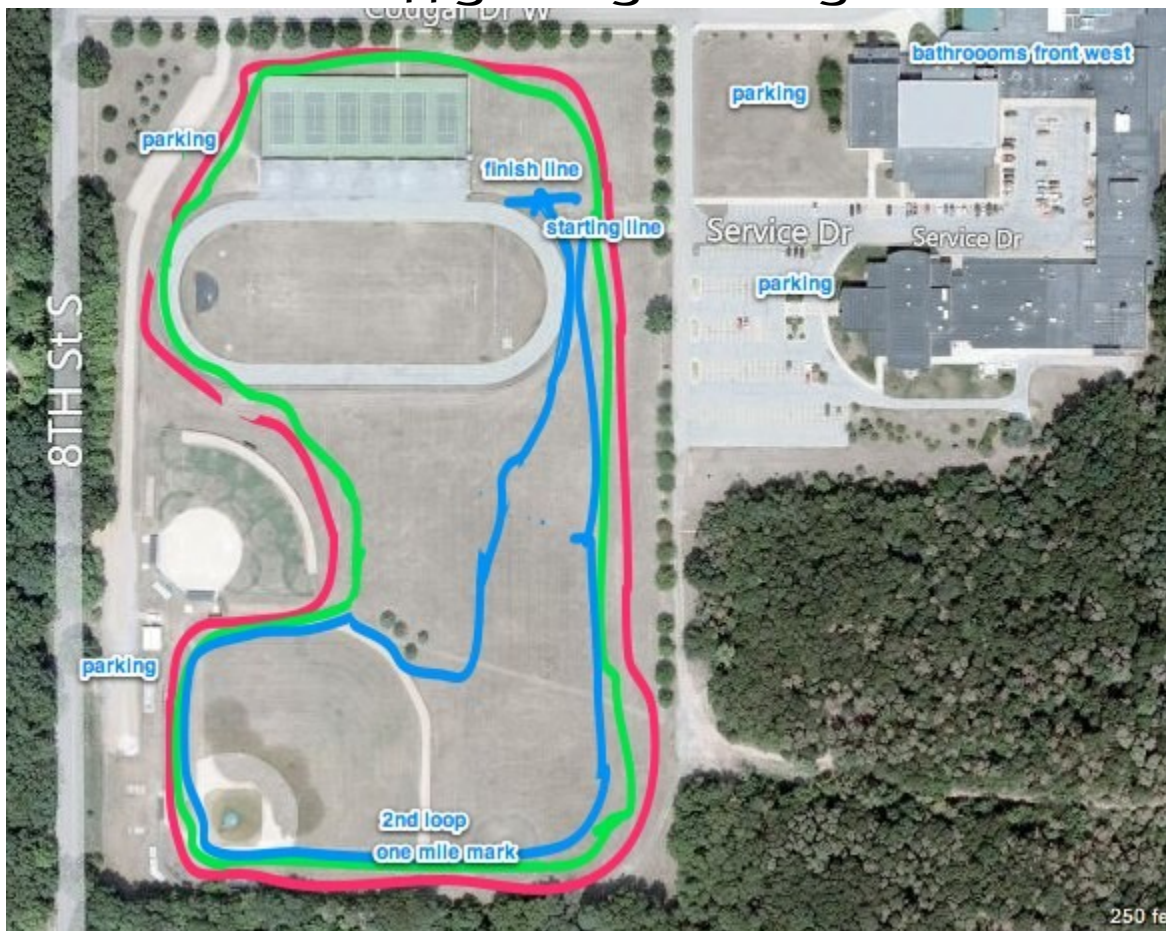


## FACILITIES AT KVCC

WE WILL BE RUNNING THE RACE STARTING JUST EAST OF THE TENNIS COURTS. IT IS DOUBLE LOOP COURSE AND A BIT MORE FINISHING IN THE SAME GENERAL AREA AS THE STARTING LINE. THE COURSE GOES AROUND THE BASEBALL AND SOFTBALL FIELDS AND THE TENNIS COURTS. IT WILL BE WELL MARKED WITH ORANGE PAINT AND CONES. IT IS AS CLOSE TO A TWO MILE COURSE AS I COULD GET WITHOUT IT BEING CERTIFIED :-)

BATHROOM FACILITIES ARE LOCATED ACROSS THE PARKING LOT IN THE FAR WEST FRONT ENTRANCE OF KVCC. POSSIBLY BY THE BASEBALL FIELD AS WELL. I AM WORKING ON THAT.

PARKING IS AVAILABLE IN THE MAIN KVCC PARKING LOT ON THE WESTERN END OF CAMPUS. ADDITIONAL PARKING CAN BE FOUND AT THE WEST SIDE OF THE TENNIS COURTS OFF 8TH STREET.



FIRST LOOP RED-SECOND LOOP GREEN-3<sup>RD</sup> HALF LOOP BLUE